

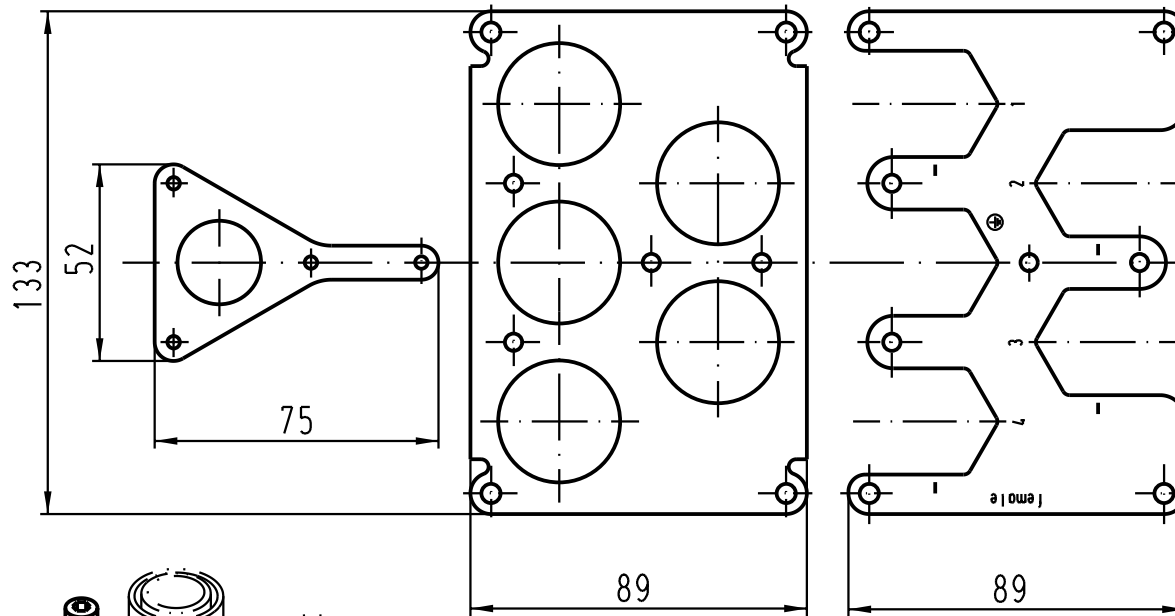
5

4

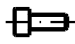



3

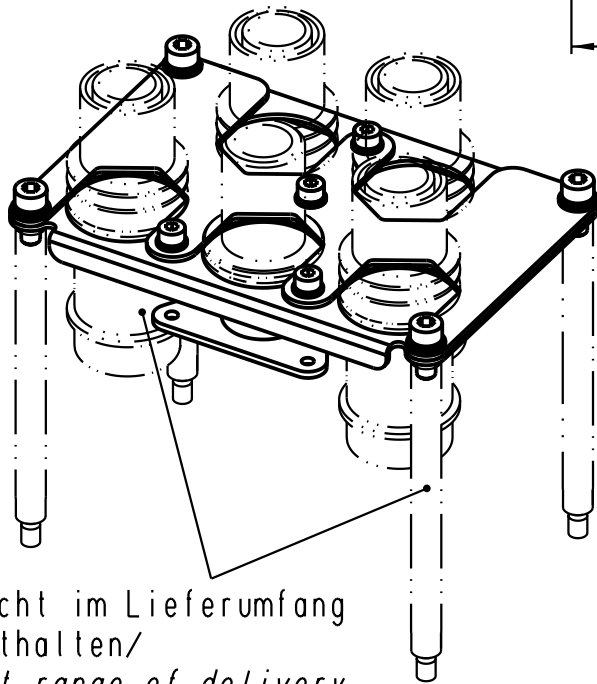
2

1





Lose mitgeliefert: /
separately enclosed:

-  4 x Zylinderschraube M4x10 /
4 x fillister head cap screw M4x10
-  4 x Zylinderschraube M5x12 /
4 x fillister head cap screw M5x12
-  4 x Sperrkantscheibe SK S4 /
4 x washer M4
-  4 x Sperrkantscheibe SK S5 /
4 x washer M5



nicht im Lieferumfang
enthalten/
not range of delivery

 All Dimensions in mm Original Size DIN A 4		Techn. Character.			Nicht tolerierte Masse/ Free size tolerances	
			Dat.	Name	Maststab/Scale 1:2	Halterung Han 5HC-F 350A Frame Han 5HC-F 350A Han 48HPR-gg
		Detail.	06.02.04	Ho		
		Insp.		OLE		
		Stand.				
410968	20.04.04	Loe.	HARTING Electric GmbH & Co. KG			TB 09 40 048 9909
410876			D-32339 Espelkamp			
Mod.	Dat.	Name				
					Sub.	Blatt/ page