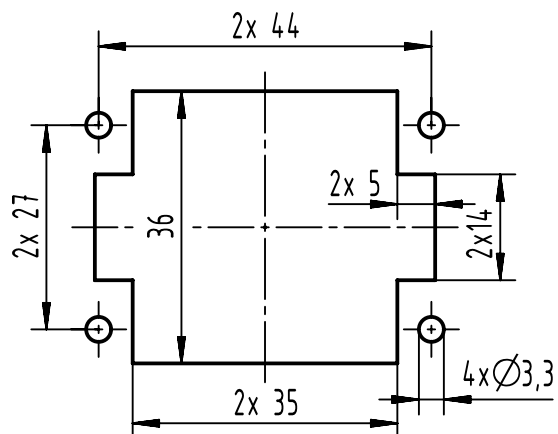


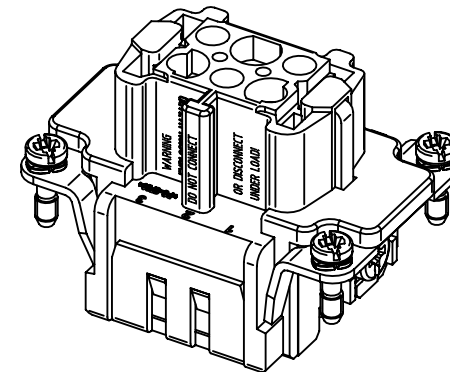
panel cut out



FOR USE WITH HAN 6E CRIMP: AWG 14, 16
 FOR USE WITH Cable Type:
 PLTC, PLTC-ER, ITC, ITC-ER, MC, MV, AND TC
 FOR USE IN CLASS I, DIVISION 2 GROUPS A, B, C AND D
 HAZARDOUS LOCATIONS OR UNCLASSIFIED LOCATIONS

THE INSTALLATION MUST BE IN ACCORDANCE WITH THE ASSOCIATED LOCATION RESTRICTIONS OF THE NATIONAL ELECTRIC CODE OR CANADIAN ELECTRICAL CODE AS APPLICABLE, INCLUDING ISSUES SUCH AS THE ROUTING, SUPPORT AND LENGTH OF THE INVOLVED CORD OR CABLE.

WARNING
 EXPLOSION HAZARD
 DO NOT CONNECT
 OR DISCONNECT
 UNDER LOAD!



	All rights reserved Department EL PD	All Dimensions in mm Original Size DIN A4		Scale 1:1	Free size tol.	Ref. Sub. TB 09 33 006 2702 v. 20.08.01			
		HARTING D-32339 Espelkamp	Created by HELLMANN	Inspected by SCHNIEDER	Standardisation	Date 2022-06-03	State Final Release	Doc-Key / ECM-Nr. 100670152/UGD/007/D 500000218293	
		Title Han 6Ex UL-F-c			Type TB		Number 09 36 506 2702	Rev. D	Page 1/1