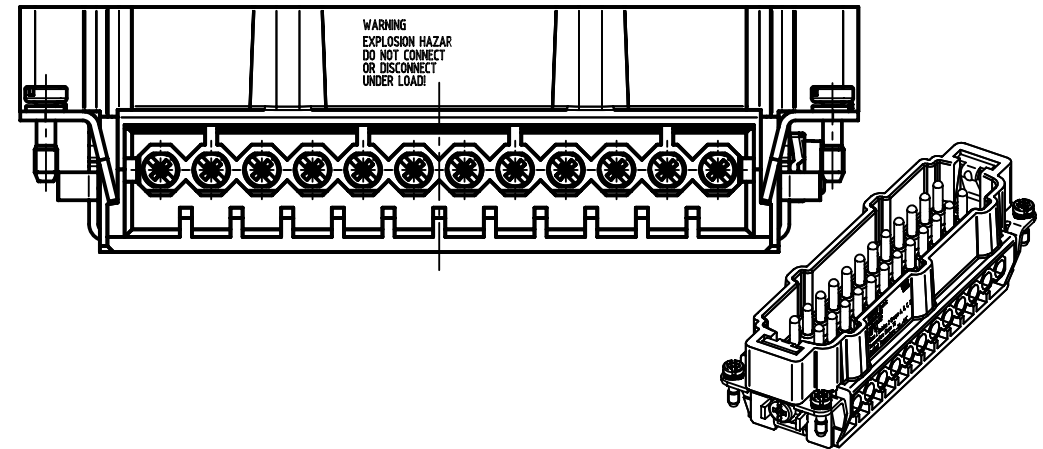
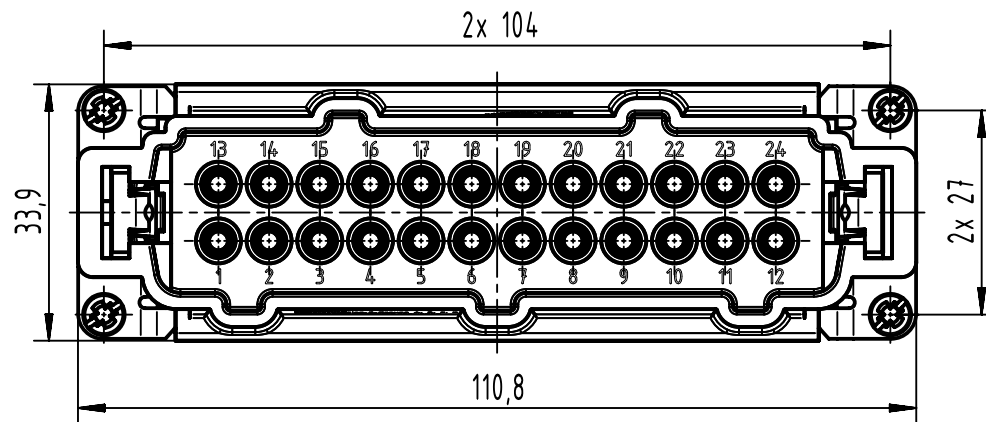
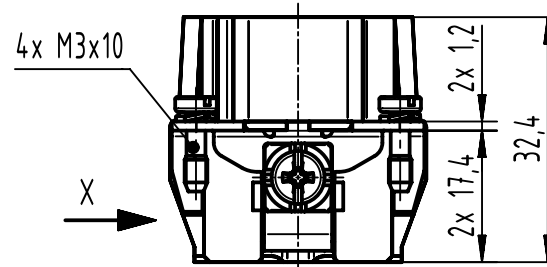
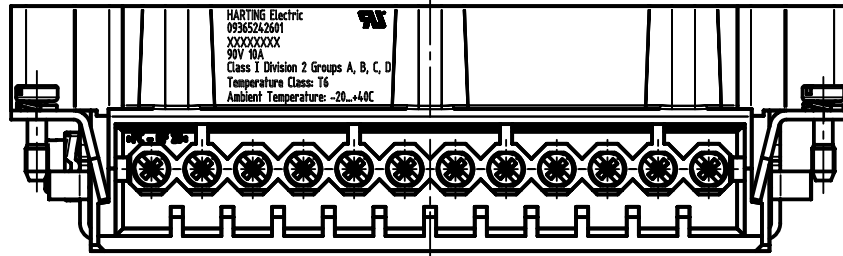


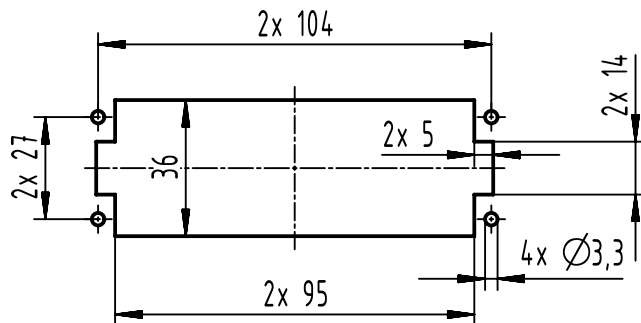
FOR USE WITH HAN 24E SCREW: AWG 14  
 FOR USE WITH Cable Type:  
 PLTC, PLTC-ER, ITC, ITC-ER, MC, MV, AND TC  
 FOR USE IN CLASS I, DIVISION 2 GROUPS A, B, C AND D  
 HAZARDOUS LOCATIONS OR UNCLASSIFIED LOCATIONS

THE INSTALLATION MUST BE IN ACCORDANCE WITH THE ASSOCIATED LOCATION RESTRICTIONS OF THE NATIONAL ELECTRICAL CODE OR CANADIAN ELECTRICAL CODE AS APPLICABLE, INCLUDING ISSUES SUCH AS THE ROUTING, SUPPORT AND LENGTH OF THE INVOLVED CORD OR CABLE.

WARNING  
 EXPLOSION HAZARD  
 DO NOT CONNECT  
 OR DISCONNECT  
 UNDER LOAD!



panel cut out (1:2)



	All Dimensions in mm Original Size DIN A4	Scale 1:1	Free size tol.		Ref.	
	All rights reserved Department EL PD	Created by HELLMANN	Inspected by SCHNIEDER	Standardisation SAP_WFRT	Date 2022-06-03	State Final Release
HARTING D-32339 Espelkamp		Title Han 24Ex UL-M-s Type TB			Doc-Key / ECM-Nr. 100669640/UGD/002/E 500000218293	
				Number 09 36 524 2601	Rev. E	Page 1/1